

ROCK-SOLID RELIABILITY

BigTow[®] TRAILERS



Description:

The Big Tow[®] deck-over tilt trailers offer convenience and durability. There are no ramps to hassle with, simply tilt the deck, drive on or off and level the deck back down. It features our patented automatic kick-out ramp that doubles as an under-ride protection bumper. The tilt deck trailer features a single-lever twin-latch system, stationary forward deck, Hutchens[®] suspension and adjustable hitch. A deck cushion cylinder eases the deck back into transport position and prevents equipment from slamming the deck down.

Quick Specs:

- 36" deck height (empty)
- 8'-6" deck width
- Tilt deck cushion cylinder
- Electric or air brakes
- Hutchens[®] suspension
- Auto kick-out ramp/under-ride protection
- Single-lever twin-latch locking system
- LED lights and sealed wiring



Patented automatic kick-out ramp doubles as under-ride protection.



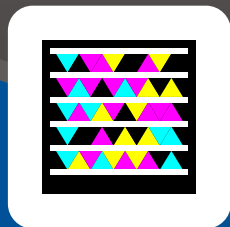
Cushion cylinder controls the deck from slamming when loading or unloading equipment.



Standard 4-foot stationary deck gives room for longer equipment and makes towing easier.

Photos may show optional equipment.

Go directly to our web site with your Smart Phone. Scan this tag with your phone's camera using the app at <http://gettag.mobi>



bigtow.com

U.S.A. BUILT
EMPLOYEE OWNED

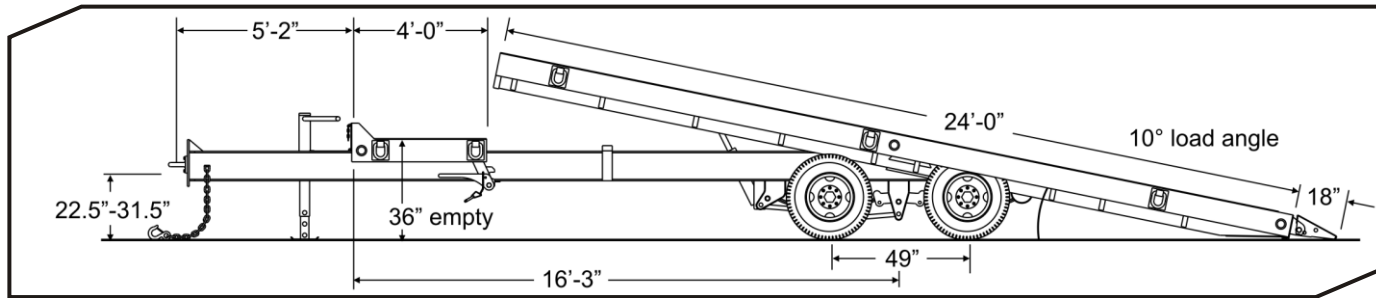


GALVANIZING
AVAILABLE

Deck-Over Tilt
B-10T / B-12T

B-10T / B-12T

ROCK-SOLID RELIABILITY



SPECIFICATIONS

S=Standard O=Optional

CAPACITY / DIMENSIONS	B-10T	B-12T
Payload Rating (lbs/kg)	18,000 / 8164	24,000 / 10,886
GVWR (lbs/kg)	25,990 / 11,789	32,200 / 14,606
GAWR (lbs/kg)	20,000 / 9072	24,000 / 10,886
Approx. Avg. Weight (lbs/kg)	8,000 / 3629	8,200 / 3719
Overall Length (ft-in/mm)	34-8 / 10,566	34-8 / 10,566
Deck Height (empty)(in/mm)	36 / 914	36 / 914
Overall Width (ft-in/mm)	8-6 / 2591	8-6 / 2591
TONGUE		
Tongue Length 5'-2" (1575mm)	S	S
Storage Tray with Lid	S	S
Pintle Ring (in)	3	3
High-Tensile Safety Chain	3/8" Grade 70	1/2" Grade 70
Bolt-on Two-Speed Parking Jack	12K	12K
FRAME / RAMPS		
Main Beam	W10x17, Gr.50	W10x17, Gr.50
One-Piece Cold-Formed Frame Rails	S	S
Side Rails (in x in x in)	8x2x3/16 Tubing	8x2x3/16 Tubing
Crossmembers	3" Jr I-beam	3" Jr I-beam
Headboard Height (in / mm)	5.5 / 140	5.5 / 140
Deck Length (ft/mm)	24+4 / 7315+1219	24+4 / 7315+1219
Deck Material	2" nom. White Oak	2" nom. White Oak
Deck Cushion Cylinder	S	S
Deck Latch	Dual-Point	Dual-Point
Approach Ramp (in x in/mm)	18 / 457	18 / 457
Load Angle (degrees)	10	10
D-Ring Tie Downs (Total / Side)	10 / 5	10 / 5
SUSPENSION / TIRES		
Adjustable Hitch 9700 Spring Suspension	S	S
Axle Capacity (each) (lbs/kg)	10,000 / 4536	12,000 / 5443
Axle Spread (in/mm)	49 / 1245	49 / 1245
Hubs	Oil Bath	Oil Bath
Brake Size (in/mm)	12.25x4 / 311x102	12.25x5 / 311x127
Electric Brakes w/Battery Break-Away Kit and Charger	S	S
Air Brakes (Full ABS Modulated, Park Brake All Axles)	O	O
Hub Piloted Budd Wheels (in/mm)	16x6 / 406x152	16x6 / 406x152
Wheel Bolt Pattern	8-bolt	8-bolt
Tires / Load Range Rating	235/85R x 16 / E	235/85R x 16 / E

STANDARD EQUIPMENT

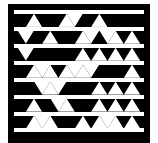
- Adjustable hitch height
- 7-pole round electrical plug
- Weather resistant sealed modular wiring
- Grommet mounted LED lights
- Registration holder
- Rust inhibiting primer
- Durable, rust inhibiting top coat
- Die-cut UV resistant vinyl decals
- D.O.T. approved conspicuity tape
- Mud flaps
- Trailer color: Equipment Charcoal

OPTIONAL EQUIPMENT

Other options may be available
See your dealer or visit our web site for details

- Gooseneck hitch
- Additional stationary deck length
- 6-pole round electrical plug
- Additional tie-downs
- Spare tire and wheel mount
- Spare tire and wheel
- Color options: Construction Yellow, Equipment Red, Equipment Blue, Equipment Charcoal
- Galvanizing

Download these PDF specs to your Smart Phone. Scan this tag with your phone's camera using the app at <http://gettag.mobi>



*Listed GVWR, weights, and dimensions are for reference only. Manufacturer reserves the right to change models and specifications as they see fit. See our web site or your local authorized dealer for more information.