

ROCK-SOLID RELIABILITY

BigTow[®] TRAILERS



Description:

These premium Big Tow[®] deck-over trailers are built more durable and more stylish to provide a great looking trailer that will last a long time. They are great for hauling heavy equipment of all types. If you need a lower profile trailer, the B-20LP gives you an extra 2-inches and lower loading angle. Two-way spring-assist ramps and wood protectors are standard.



Quick Specs:

- 36"/ 34" deck height (empty)
- 8'-6" deck width
- 20'-0" deck length
- Air brakes with ABS
- Hutchens[®] suspension
- Adjustable hitch
- Two-way spring-assist ramps
- LED lights and sealed wiring



"LP" (Low-Profile) models feature a 10-inch beam, steel over the wheels and a 12-degree beavertail.

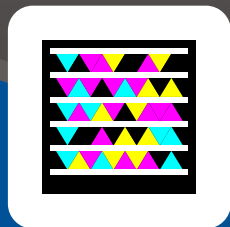


Wood protectors are standard on Big Tow B-series trailers and protect the end of the deck boards.



Two-way spring assist ramps allow you to easily lift ramps off deck and also off the ground. Grommet mounted LED lights are standard.

Go directly to our web site with your Smart Phone. Scan this tag with your phone's camera using the app at <http://gettag.mobi>



Photos may show optional equipment.

bigtow.com

U.S.A. BUILT
EMPLOYEE OWNED

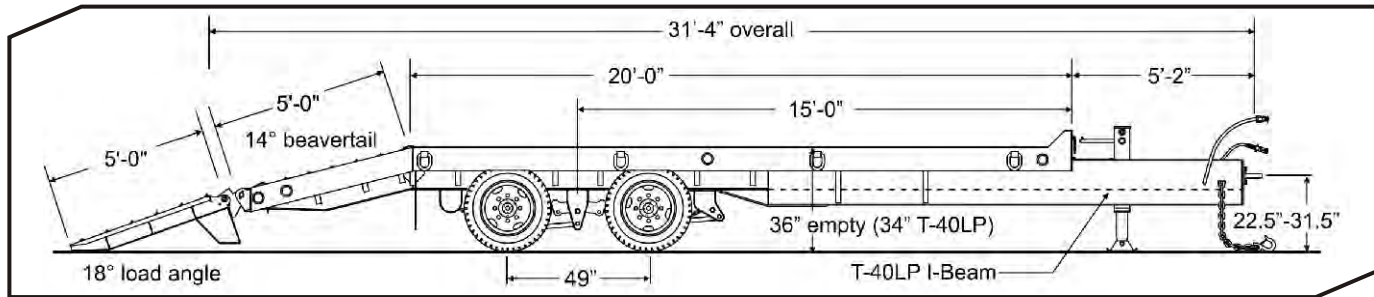


GALVANIZING
AVAILABLE

Deck-Over
B-20 / B-20LP

B-20 / B-20LP

ROCK-SOLID RELIABILITY



SPECIFICATIONS

S=Standard O=Optional

CAPACITY / DIMENSIONS	B-20	B-20LP
Capacity Rating (lbs/kg)	40,000 / 18,144	40,000 / 18,144
GVWR (lbs/kg)	48,800 / 22,135	48,600 / 22,045
GAWR (lbs/kg)	36,320 / 11,789	36,320 / 11,789
Approx. Weight (lbs/kg)	8,800 / 3992	8,600 / 3901
Overall Length (ft-in/mm)	31-4 / 9550	31-4 / 9550
Deck Height (empty)(in/mm)	36 / 914	34 / 864
Deck Length (ft-in/mm)	20-0 / 6096	20-0 / 6096
Overall Width (ft-in/mm)	8-6 / 2591	8-6 / 2591
TONGUE		
Tongue Length (ft-in/mm)	5-2 / 1575	5-2 / 1575
Storage Tray with Lid	S	S
Pintle Ring (in)	S	S
High-Tensile Safety Chain (size - in)	1/2 Grade 80	1/2 Grade 80
Bolt-on Two-Speed Parking Jack	25K	25K
FRAME / RAMPS		
Main Beam	W16 x 26, Gr. 50	W10, x 26 Gr. 50
One-Piece Cold-Formed Frame Rails	S	S
Crossmembers	3" Jr I-beam	3" Jr I-beam
Headboard (in/mm)	5.5 / 140	5.5 / 140
Channel Side Rails (in/mm)	8 / 203	8 / 203
Deck Material	2" nom. White Oak	2" nom. White Oak
Wood Protectors	S	S
Forged D-Ring Tie Downs (total/Side)	8 / 4	8 / 4
Beavertail (ft-in / mm) (angle-degrees)	5-0 / 1524 (14)	5-0 / 1524 (12)
Ramps (ft-in x in/mm)	5-0 x 21 / 1524 x 533	5-0 x 21 / 1524 x 533
Two-Way Spring Assist	S	S
SUSPENSION / TIRES		
Hutchens Spring Suspension	S	S
No. of Axles	2	2
Axle Capacity (each) (lbs/kg)	22,500 / 10,206	22,500 / 10,206
Axle Spread (in/mm)	49 / 1245	49 / 1245
Hubs	Oil Bath	Oil Bath
Brake Size (in/mm)	12.25x7.5 / 311x191	12.25x7.5 / 311x191
Air Brakes (Full ABS Modulated, Park Brake All Axles)	S	S
Hub Piloted Budd-type Wheels (in/mm)	17.5x6.75 / 445x171	17.5x6.75 / 445x171
Wheel Bolt Pattern	8-bolt	8-bolt
Tires / Load Range Rating	215/75R x 17.5 / H	215/75R x 17.5 / H

STANDARD EQUIPMENT

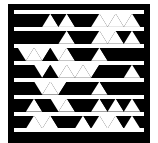
- Adjustable hitch height
- 7-pole round electrical plug
- Weather resistant sealed modular wiring
- Grommet mounted LED lights
- Registration holder
- Rust inhibiting primer
- Durable, rust inhibiting top coat
- Die-cut UV resistant vinyl decals
- D.O.T. approved conspicuity tape
- Mud flaps
- Trailer color: Equipment Charcoal
- Ramp color: Equipment Black

OPTIONAL EQUIPMENT

Other options may be available
See your dealer or visit our web site for details

- Dual parking jacks
- Additional deck length
- Additional tie-downs
- Rub rail with stake pockets
- 12K electric winch
- Spare tire and wheel mount
- Spare tire and wheel
- Tire upgrade (load range H)
- Double-break beavertail (T-40 only)
- Several beavertail options
- Color options: Construction Yellow, Equipment Red, Equipment Blue, Equipment Black
- Galvanizing

Download these PDF specs to your Smart Phone. Scan this tag with your phone's camera using the app at <http://gettag.mobi>



*Listed GVWR, weights, and dimensions are for reference only. Manufacturer reserves the right to change models and specifications as they see fit. See our web site or your local authorized dealer for more information.