

ROCK-SOLID RELIABILITY

BigTow[®] TRAILERS



Description:

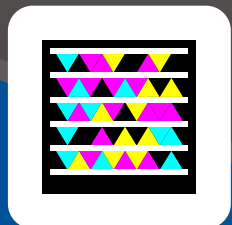
The Big Tow[®] B-25RG and B-35RG Rigid Gooseneck trailers are ready to haul your heavy equipment behind your fifth-wheel tractor. They feature dual axles, two-way spring-assist ramps, Hutchens suspension and sealed wiring. A 10-foot top deck can haul a skid-loader or other smaller equipment (optional loading ramps required). A triple axle is available on the B-35RG.



Quick Specs:

- 36" deck height (empty)
- 8'-6" deck width
- 20'-0"/22'-0" deck w/10'-0" top deck
- Air brakes
- Hutchens[®] suspension
- Adjustable hitch
- Two-way spring-assist ramps
- LED lights and sealed wiring

Go directly to our web site with your Smart Phone. Scan this tag with your phone's camera using the app at <http://gettag.mobi>



bigtow.com



S.A.E. King Pin with smooth approach plate for easy hook-up.



Wood protectors are standard on Towmaster T-series trailers and protect the end of the deck boards.



Two-way spring assist ramps allow you to easily lift ramps off deck and also off the ground. Grommet mounted LED lights are standard.

Photos may show optional equipment.

U.S.A. BUILT
EMPLOYEE OWNED

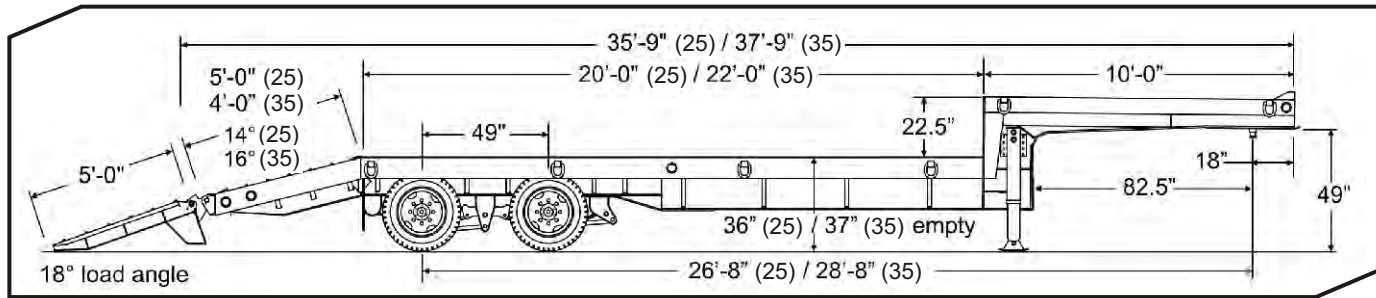


GALVANIZING
AVAILABLE

Rigid Gooseneck
B-25RG / B-35RG

B-25RG / B-35RG

ROCK-SOLID RELIABILITY



SPECIFICATIONS

S=Standard O=Optional

CAPACITY / DIMENSIONS	B-25RG	B-35RG
Capacity Rating (lbs/kg)	50,000 / 22,680	70,000 / 31,751
GVWR (lbs/kg)	61,500 / 27,896	85,600 / 38,827
Approx. Weight (lbs/kg)	11,500 / 5216	15,600 / 7076
Overall Length (ft-in/mm)	35-9 / 10,897	37-9 / 11,506
Deck Height (empty)(in/mm)	36 / 914	34 / 864
Deck Length (ft-in/mm)	20-0 / 6096	22-0 / 6706
Overall Width (ft-in/mm)	8-6 / 2591	8-6 / 2591
GOOSENECK		
Top Deck Length (ft-in/mm)	10-0 / 3048	10-0 / 3048
Swing Clearance (in/mm)	82.5 / 2096	82.5 / 2096
Truck Height (in/mm)	49 / 1245	45 / 1245
(2) Bolt-on Two-Speed Parking Jacks	25K	25K
FRAME / RAMPS		
Main Beam (up to 24')	W16 x 26, Gr. 50	Mfg. Cambered
Main Beam (25'+)	Mfg. Cambered	Mfg. Cambered
Deck Crossmembers	3" Jr I-beam	3" Jr I-beam
Beam Crossmembers	N/A	W6 x 9, Gr. 50
Channel Side Rails (in/mm)	8 / 203	8 / 203
Deck Material	2" nom. White Oak	Full 2" White Oak
Wood Protectors	S	S
Forged D-Ring Tie Downs (total/Side)	12 / 6	12 / 6
Beavertail (ft-in / mm) (angle-degrees)	5-0 / 1524 (14)	4-0 / 1219 (16)
Ramps (ft-in x in/mm)	5-0 x 21 / 1524 x 533	5-0 x 21 / 1524 x 533
Two-Way Spring Assist	S	S
SUSPENSION / TIRES		
Hutchens Spring Suspension	S	S
No. of Axles	2	2
Axle Capacity (each) (lbs/kg)	22,500 / 10,206	22,500 / 10,206
Axle Spread (in/mm)	49 / 1245	49 / 1245
Hubs	Oil Bath	Oil Bath
Brake Size (in/mm)	12.25x7.5 / 311x191	12.25x7.5 / 311x191
Air Brakes (Full ABS Modulated, Park Brake All Axles)	S	S
Hub Piloted Budd-type Wheels (in/mm)	17.5x6.75 / 445x171	17.5x6.75 / 445x171
Wheel Bolt Pattern	8-bolt	8-bolt
Tires / Load Range Rating	215/75R x 17.5 / H	235/75R x 17.5 / H

STANDARD EQUIPMENT

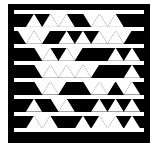
- S.A.E. King Pin
- 7-pole round electrical plug
- Weather resistant sealed modular wiring
- Grommet mounted LED lights
- Registration holder
- Rust inhibiting primer
- Durable, rust inhibiting top coat
- Die-cut UV resistant vinyl decals
- D.O.T. approved conspicuity tape
- Mud flaps
- Trailer color: Equipment Charcoal
- Ramp color: Equipment Black

OPTIONAL EQUIPMENT

Other options may be available
See your dealer or visit our web site for details

- Sloped gooseneck
- Additional deck length
- Additional tie-downs
- 12K electric winch
- Third axle on B-35RG
- Spare tire and wheel mount
- Spare tire and wheel
- Double-break beavertail on B-25RG
- Several beavertail and ramp options
- Color options: Construction Yellow, Equipment Red, Equipment Blue, Equipment Black

Download these PDF specs to your Smart Phone. Scan this tag with your phone's camera using the app at <http://gettag.mobi>



*Listed GVWR, weights, and dimensions are for reference only. Manufacturer reserves the right to change models and specifications as they see fit. See our web site or your local authorized dealer for more information.