

ROCK-SOLID RELIABILITY

BigTow[®] TRAILERS



Description:

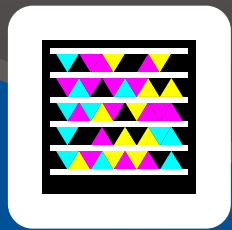
The B-35HT and B-55HT trailers by Big Tow[®] are designed for the rental and construction industries. They feature a perimeter frame design, a fifth-wheel gooseneck with top deck, hydraulic folding tail, and 12,000 lb. winch. LED lights, Angelim Pedra wood deck, hi-tensile fabricated steel beam frame, dual parking jacks, and driver side controls are also standard. Several configurations and options are available.



Quick Specs:

- 39" deck height (empty)
- 8'-6" deck width
- 43' to 48' overall length
- 10'-0" top deck
- Air ride suspension and air brakes
- Dump valve and pressure gauge
- 12K hydraulic winch/cable
- Hydraulic fold-under tail
- LED lights and sealed wiring

Go directly to our web site with your Smart Phone. Scan this tag with your phone's camera using the app at <http://gettag.mobi>



bigtow.com



12K hydraulic winch with cable is standard. It is positioned at the front of the 10-foot upper deck of the HT trailer.



Hydraulic tail creates a low load angle and easy approach. Rear tail section folds under when in transport position.



Easily haul several types of equipment with the HT trailer by Towmaster.

Photos may show optional equipment.

U.S.A. BUILT
EMPLOYEE OWNED

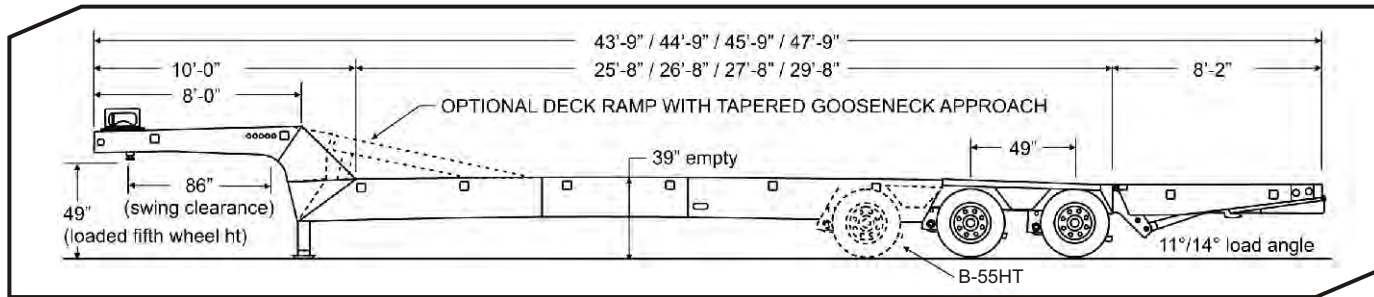


GALVANIZING
AVAILABLE

Hydraulic Tail B-35HT / B-55HT

B-35HT / B-55HT

ROCK-SOLID RELIABILITY



SPECIFICATIONS

S=Standard O=Optional

B-35HT B-55HT

| CAPACITY / DIMENSIONS | B-35HT | B-55HT |
|---|----------------------|----------------------|
| Capacity Rating (lbs/kg) | 70,000 / 31,751 | 110,000 / 49,895 |
| GVWR (lbs/kg) | 87,800 / 39,825 | 132,800 / 60,237 |
| GAWR (lbs/kg) | 45,400 / 20,593 | 68,100 / 30,890 |
| Approx. Weight (lbs/kg) | 17,800 / 8074 | 22,800 / 10,342 |
| Overall Length (ft-in/mm) | See drawing | See drawing |
| Deck Height (empty)(in/mm) | 39 / 991 | 39 / 991 |
| Deck Length (ft-in/mm) | See drawing | See drawing |
| Overall Width (ft-in/mm) | 8-6 / 2591 | 8-6 / 2591 |
| GOOSENECK | | |
| Gooseneck Type | Tapered | Tapered |
| Top Deck Length (ft-in/mm) | 10-0 / 3048 | 10-0 / 3048 |
| Swing Clearance (in/mm) | 86 / 2184 | 86 / 2184 |
| Truck Height (in/mm) | 49 / 1245 | 49 / 1245 |
| (2) Bolt-on Telescoping Parking Jacks | 25K | 25K |
| 12K Hydraulic Winch with cable | S | S |
| FRAME / RAMPS | | |
| Main Beam | Mfg. Cambered | Mfg. Cambered |
| Crossmembers | 8" I-beam | 8" I-beam |
| Crossmember Spacing (in/mm) | 12 / 305 | 12 / 305 |
| Deck Material | Nom 2" Angelim Pedra | Nom 2" Angelim Pedra |
| 6' Hyd. Deck Ramp w/Tapered Gooseneck Approach | O | O |
| 8' Hyd. Deck Ramp w/Tapered Gooseneck Approach | O | O |
| Tie Downs (4'-0" centers) (total/Side) | Stake Pockets | Stake Pockets |
| Hyd. Tail (ft-in x in/mm) | 12-0" / 3658 | 12-0" / 3658 |
| SUSPENSION / TIRES | | |
| Suspension | Air | Air |
| No. of Axles | 2 | 3 |
| Axle Capacity (each) (lbs/kg) | 22,500 / 10,206 | 22,500 / 10,206 |
| Axle Spread (in/mm) | 49 / 1245 | 49 / 1245 |
| Hubs | Oil Bath | Oil Bath |
| Brake Size (in/mm) | 12.25x7.5 / 311x191 | 12.25x7.5 / 311x191 |
| Air Brakes (Full ABS Modulated, Park Brake All Axles) | S | S |
| Hub Piloted Budd-type Wheels (in/mm) | 17.5x6.75 / 445x171 | 17.5x6.75 / 445x171 |
| Wheel Bolt Pattern | 8-bolt | 8-bolt |
| Tires / Load Range Rating | 235/75R x 17.5 / H | 235/75R x 17.5 / H |

STANDARD EQUIPMENT

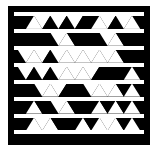
- S.A.E. King Pin
- 7-pole round electrical plug
- Weather resistant sealed modular wiring
- Grommet mounted LED lights
- Registration holder
- Rust inhibiting primer
- Durable, rust inhibiting top coat
- Die-cut UV resistant vinyl decals
- D.O.T. approved conspicuity tape
- Mud flaps
- Trailer color: Equipment Charcoal

OPTIONAL EQUIPMENT

Other options may be available
See your dealer or visit our web site for details

- Deck ramp with tapered gooseneck
- 20K winch
- Remote control
- Self-contained hydraulic unit
- Dual hydraulic controls
- 2-speed 25K parking jacks
- Additional deck length
- Several deck traction options
- Several tie-down options
- Aluminum wheel options
- Spare tire and wheel mount
- Spare tire and wheel
- Light options
- Color options: Construction Yellow, Equipment Red, Equipment Blue, Equipment Black

Download these PDF specs to your Smart Phone. Scan this tag with your phone's camera using the app at <http://gettag.mobi>



*Listed GVWR, weights, and dimensions are for reference only. Manufacturer reserves the right to change models and specifications as they see fit. See our web site or your local authorized dealer for more information.