

ROCK-SOLID RELIABILITY

BigTow[®] TRAILERS



Description:

The B-3T is a pan type tilt-deck trailer designed for hauling small equipment. The deck features white oak wood and 7-inch high sides. The low deck height offers a shallow tilt angle that allows small equipment to easily climb the incline. For scissor lifts, an "SL" option adds ramps for an even lower load angle. The B-3T features a rubber-ride axle for a smooth ride, electric brakes, an adjustable hitch, and a positive locking (over-center) latch system to safely keep the deck secured to the frame.

Quick Specs:

- 2" nominal white oak deck
- 16.5" deck height (empty)
- 77" between fenders
- 12' and 14' deck lengths
- Electric brakes
- Dexter[®] Torflex[®] axle
- E-Z Lube hubs
- LED Lights and Sealed Wiring



Positive locking (over-center) latch system keeps deck secured to the frame.



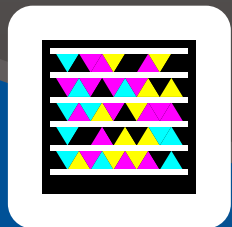
Grocket mounted LED lights are standard.



The "SL" (Scissor Lift) option includes ramps to lower the loading incline.

Photos may show optional equipment.

Go directly to our web site with your Smart Phone. Scan this tag with your phone's camera using the app at <http://gettag.mobi>



bigtow.com

U.S.A. BUILT
EMPLOYEE OWNED

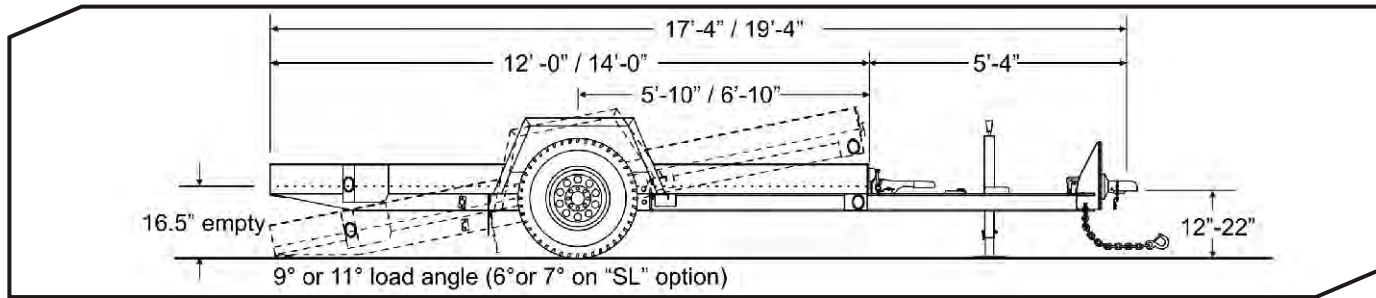


GALVANIZING
AVAILABLE

Drop-Deck Tilt
B-3DT

B-3DT

ROCK-SOLID RELIABILITY



STANDARD EQUIPMENT

- Adjustable hitch height
- Weather resistant sealed modular wiring
- Grommet mounted LED lights
- Registration holder
- Rust inhibiting primer
- Durable, rust inhibiting top coat
- Die-cut UV resistant vinyl decals
- D.O.T. approved conspicuity tape
- Mud flaps
- RV electrical plug
- Trailer color: Equipment Charcoal

OPTIONAL EQUIPMENT

Other options may be available
See your dealer or visit our web site for details

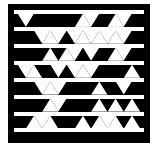
- Hydraulic surge brakes
- 3" pintle ring or 2-5/16" ball coupler
- Steel deck
- Deck cushion cylinder
- 6-pole round electrical plug
- Additional tie-downs
- Spare tire and wheel
- Tire upgrade, 235/85R16, 10-ply, load range E tires
- "SL" ramp option for hauling scissor lifts
- Color options: Construction Yellow, Equipment Red, Equipment Blue, Equipment Black
- Galvanizing

SPECIFICATIONS

S=Standard O=Optional
B-3DT

CAPACITY / DIMENSIONS				
Payload Rating (lbs/kg)	5,000 / 2268			
GVWR (lbs/kg)	7,000 / 3175			
GAWR (lbs/kg)	7,000 / 3175			
Approx. Avg. Weight (lbs/kg)	2,000 / 907			
Overall Length (12'- 0") (ft-in/mm)	17-4 / 5283			
Overall Length (14'- 0") (ft-in/mm)	19-4 / 5893			
Deck Height (empty)(in/mm)	16.5 / 419			
Overall Width (ft-in/mm)	8-6 / 2591			
Load Width (in/mm)	77 / 1956			
TONGUE				
Tongue Length (ft-in/mm)	5'-4" / 1626			
Pintle Ring (in)	2.5			
Safety Chain	3/8" Grade 43			
Bolt-on Drop-Leg Parking Jack	7K			
FRAME / RAMPS				
Main Beam	M4 x 13 beam			
Crossmembers	3" Jr I-beam			
Headboard Height (in / mm)	7 / 177			
Deck	Oak Wood			
Deck Lip (in / mm)	7 / 177			
Deck Latch	Single Point			
Load Angle (degrees) – depending on deck length	9, 11			
Tie Downs	D-ring			
Number of Tie-Downs (Total / Side)	6 / 3			
SUSPENSION / TIRES				
Rubber-Ride Axles w/Warranty	S			
Axle Capacity (each) (lbs/kg)	7,000 / 3175			
Axle Spread (in/mm)	N/A			
Hubs	E-Z Lube			
Electric Brakes w/Forward Adjust	S			
Brake Size (in/mm)	12x2 / 305x51			
Battery Break-Away Kit with Tow Charger	S			
Wheels (in/mm)	15x6 / 381x152			
Wheel Bolt Pattern	8-bolt			
Tires / Load Range Rating	225/75R x 15 / D			

Download these PDF specs to your Smart Phone. Scan this tag with your phone's camera using the app at <http://gettag.mobi>



*Listed GVWR, weights, and dimensions are for reference only. Manufacturer reserves the right to change models and specifications as they see fit. See our web site or your local authorized dealer for more information.