

ROCK-SOLID RELIABILITY

BigTow[®] TRAILERS



Description:

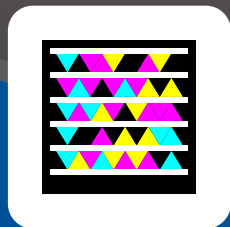
Get great value with the BE-series by Big Tow[®]. These models are built on heavy-duty I-beam frames and feature the basics you need without breaking your budget; adjustable hitch, slipper-spring suspension, off-the-ground spring-assist ramps, oak wood deck and sealed wiring and lights. If you need a budget trailer to haul your equipment, the BE is the perfect investment.



Quick Specs:

- 36" deck height (empty)
- 8'-6" deck width
- 20' deck length
- Electric brakes (Air optional)
- General Duty spring suspension
- Self-cleaning angle-iron beavertail
- One-way spring-assist ramps
- Incandescent lights and sealed wiring

Go directly to our web site with your Smart Phone. Scan this tag with your phone's camera using the app at <http://gettag.mobi>



bigtow.com



Dexter slipper-spring suspension provides the capacity you need at a budget price.



Self-cleaning angle iron beavertail also provides positive traction when loading equipment.



Off-the-ground spring assist ramps for easy ramp lifting. Grommet mounted incandescent lights are standard.

Photos may show optional equipment.

U.S.A. BUILT
EMPLOYEE OWNED

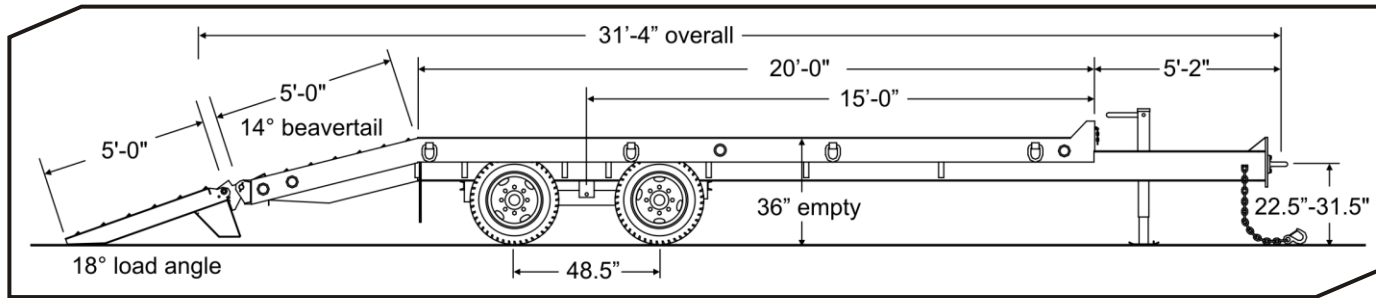


GALVANIZING
AVAILABLE

Deck-Over
BE-10 / BE-12

BE-10 / BE-12

ROCK-SOLID RELIABILITY



SPECIFICATIONS

S=Standard O=Optional

CAPACITY / DIMENSIONS	BE-10	BE-12
Capacity Rating (lbs/kg)	19,000 / 8618	24,000 / 10,866
GVWR (lbs/kg)	25,990 / 11,789	30,900 / 14,061
GAWR (lbs/kg)	20,000 / 9072	24,000 / 10,866
Approx. Weight (lbs/kg)	6,700 / 3039	6,900 / 3130
Overall Length (ft-in/mm)	31-4 / 9550	31-4 / 9550
Deck Height (empty)(in/mm)	36 / 914	36 / 914
Deck Length (ft-in/mm)	20-0 / 6096	20-0 / 6096
Overall Width (ft-in/mm)	8-6 / 2591	8-6 / 2591
TONGUE		
Tongue Length (ft-in/mm)	5-2 / 1575	5-2 / 1575
Storage Tray with Lid	S	S
Pintle Ring (in)	S	S
High-Tensile Safety Chain (size - in)	3/8 Grade 70	1/2 Grade 70
Bolt-on Drop-Leg Parking Jack	12K	12K
FRAME / RAMPS		
Main Beam	W10 x 17, Gr. 50	W10, x 17 Gr. 50
One-Piece Cold-Formed Frame Rails	S	S
Crossmembers	3" Jr I-beam	3" Jr I-beam
Headboard (in/mm)	5.5 / 140	5.5 / 140
Channel Side Rails (in/mm)	8 / 203	8 / 203
Deck Material	2" nom. White Oak	2" nom. White Oak
Wood Protectors	O	O
Forged D-Ring Tie Downs (total/Side)	8 / 4	8 / 4
Beavertail (ft-in / mm) (angle-degrees)	5-0 / 1524 (14)	5-0 / 1524 (14)
Ramps (ft-in x in/mm)	5-0 x 21 / 1524 x 533	5-0 x 21 / 1524 x 533
Off-the-Ground Spring Assist	S	S
SUSPENSION / TIRES		
Slipper-Spring Suspension	S	S
No. of Axles	2	2
Axle Capacity (each) (lbs/kg)	10,000 / 4536	12,000 / 5443
Axle Spread (in/mm)	49 / 1245	49 / 1245
Hubs	Oil Bath	Oil Bath
Electric Brakes	S	S
Brake Size (in/mm)	12.25x4 / 311x102	12.25x5 / 311x127
Air Brakes (Full ABS Modulated, Park Brake All Axles)	O	O
Hub Piloted Budd-type Wheels (in/mm)	16x6 / 406x152	16x6 / 406x152
Wheel Bolt Pattern	8-bolt	8-bolt
Tires / Load Range Rating	235/85R x 16 / E	235/85R x 16 / E

STANDARD EQUIPMENT

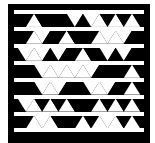
- Adjustable hitch height
- 7-pole round electrical plug
- Weather resistant sealed modular wiring
- Grommet mounted incandescent lights
- Registration holder
- Rust inhibiting primer
- Durable, rust inhibiting top coat
- Die-cut UV resistant vinyl decals
- D.O.T. approved conspicuity tape
- Mud flaps
- Trailer color: Equipment Charcoal
- Ramp color: Equipment Black

OPTIONAL EQUIPMENT

Other options may be available
See your dealer or visit our web site for details

- Gooseneck
- 25K two-speed parking jack
- Dual parking jacks
- Additional deck length
- Additional tie-downs
- Rub rail with stake pockets
- Deck wood protectors
- 12K electric winch
- Spare tire and wheel mount
- Spare tire and wheel
- Tire upgrade (load range G)
- Double-break beavertail
- Several beavertail options
- Color options: Construction Yellow, Equipment Red, Equipment Blue, Equipment Black
- Galvanizing

Download these PDF specs to your Smart Phone. Scan this tag with your phone's camera using the app at <http://gettag.mobi>



*Listed GVWR, weights, and dimensions are for reference only. Manufacturer reserves the right to change models and specifications as they see fit. See our web site or your local authorized dealer for more information.