

ROCK-SOLID RELIABILITY

# BigTow<sup>®</sup> TRAILERS



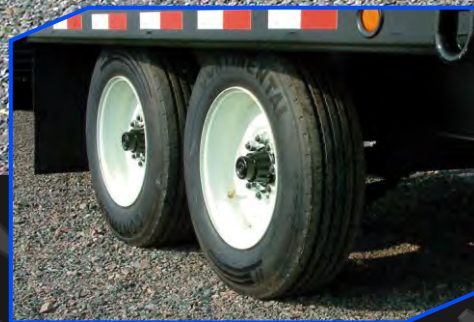
## Description:

The economical BE-8 is a great trailer for mid-sized equipment. It's built on the Big Tow I-beam frame and features 3-inch I-beam crossmembers, 8'-6" wide oak wood deck, 5-foot angle-iron beavertail and 5-foot one-way spring assist ramps. Sealed wiring and grommet mounted incandescent lights are standard.



## Quick Specs:

- 36" deck height (empty)
- 8'-6" wide white oak deck
- 20' deck
- 5' angle-iron beavertail
- D-ring tie-downs
- Electric brakes
- Torflex<sup>®</sup> axles
- One-way spring-assist ramps



Single-wheel tandem axle. 8K Dexter Torflex axles with rubber-ride suspension.



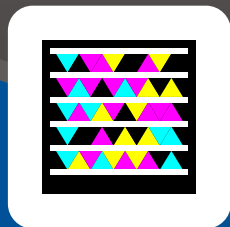
Angle-iron beavertail and ramps provide excellent traction for loading and unloading.



One-way spring-assist ramps and grommet mounted incandescent lights.

Photos may show optional equipment.

Go directly to our web site with your Smart Phone. Scan this tag with your phone's camera using the app at <http://gettag.mobi>



[bigtow.com](http://bigtow.com)

U.S.A. BUILT  
EMPLOYEE OWNED

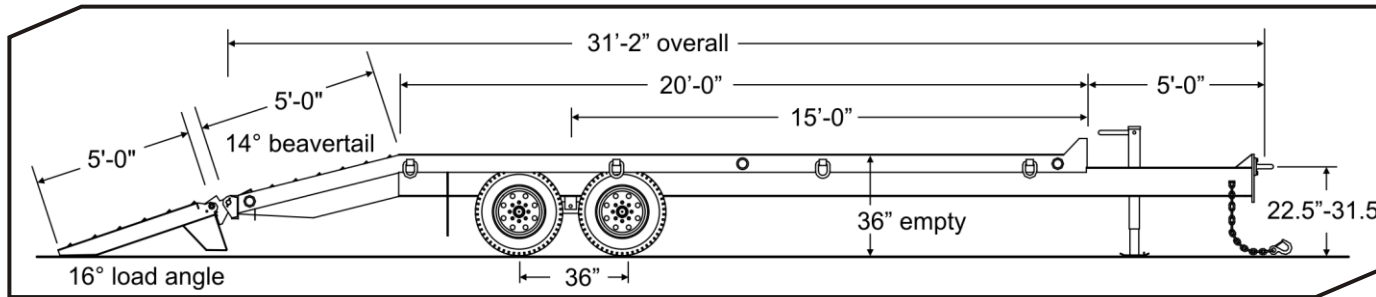


GALVANIZING  
AVAILABLE

Deck-Over  
BE-8

# BE-8

# ROCK-SOLID RELIABILITY



## SPECIFICATIONS

S=Standard O=Optional

BE-16

### CAPACITY / DIMENSIONS

Capacity Rating (lbs/kg)	16,000 / 7258		
GVWR (lbs/kg)	21,900 / 9934		
GAWR (lbs/kg)	16,000 / 7257		
Approx. Weight (lbs/kg)	5,900 / 2676		
Deck Length (ft-in/mm)	20-0 / 6096		
Overall Length (ft-in/mm)	31-5 / 9576		
Deck Height (empty)(in/mm)	36 / 914		
Overall Width (ft-in/mm)	8-6 / 2591		

### TONGUE

Tongue Length (ft-in/mm)	5-0 / 1524		
Storage Tray	S		
Storage Tray Lid	O		
Pintle Ring (in)	3"		
High-Tensile Safety Chain (size - in)	3/8 Grade 70		
Bolt-on Drop-Leg Parking Jack	12K		

### FRAME / RAMPS

Main Beam	W10 x 17, Gr. 50		
One-Piece Cold-Formed Frame Rails	S		
Crossmembers	3" Jr I-beam		
Headboard (in/mm)	5.5 / 140		
Channel Side Rails (in/mm)	6 / 152		
Deck Material	2" nom. White Oak		
Tie Downs	D-rings		
Tie Downs (Total/Side)	8 / 4		
Beavertail (ft-in / mm) (angle-degrees)	5-0 / 1524 (14)		
Beavertail Type	Angle-Iron		
Ladder Style Ramps (ft-in x in/mm)	5-0 x 21 / 1524 x 533		
Off-the-Ground Spring Assist	S		

### SUSPENSION / TIRES

Dexter Torflex Rubber Torsion Suspension	S		
No. of Axles	2		
Axle Capacity (each) (lbs/kg)	8,000 / 3629		
Axle Spread (in/mm)	34 / 864		
Hubs	Standard Lube		
Electric Brakes w/Forward Adjust	S		
Battery Break-Away Kit w/Tow Charger	S		
Brake Size (in/mm)	12.25x3.38 / 311x86		
Wheels (in/mm)	17.5x6.75 / 445x171		
Wheel Bolt Pattern	8-bolt		
Tires / Load Range Rating	215/75R x 17.5 / H		

## STANDARD EQUIPMENT

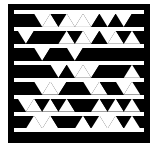
- Adjustable hitch height
- Weather resistant sealed modular wiring
- Grommet mounted incandescent lights
- Registration holder
- Rust inhibiting primer
- Durable, rust inhibiting top coat
- Die-cut UV resistant vinyl decals
- DOT conspicuity tape
- Mud flaps
- Adjustable ramp width spacing
- RV electrical plug
- Trailer color: Equipment Charcoal  
Ramp color: Equipment Black

## OPTIONAL EQUIPMENT

Other options may be available  
See your dealer or visit our web site for details

- 2-5/16" ball coupler
- Gooseneck hitch
- 6-pole round electrical plug
- Storage tray lid
- 8K electric winch
- Additional tie-downs
- D-ring tie-downs
- E-Z Lube hubs
- Spare tire and wheel mount
- Spare tire and wheel
- Ramp lift springs
- Several ramp options available
- LED lights
- Color options: Construction Yellow, Equipment Red, Equipment Blue, Equipment Black
- Galvanizing

Download these PDF specs to your Smart Phone. Scan this tag with your phone's camera using the app at <http://gettag.mobi>



\*Listed GVWR, weights, and dimensions are for reference only. Manufacturer reserves the right to change models and specifications as they see fit. See our web site or your local authorized dealer for more information.