



Positive locking (over-center) latch system keeps deck secured to the frame.



Grommet mounted LED lights are standard.



Sealed battery break-away system charges while plugged into the tow vehicle and can be checked at the press of a button.

Description:

The B-2DT trailer is a pan type tilt deck and is designed for hauling small equipment and short loads of sand, rock or debris. The deck features a slip-resistant texture and 8-inch high sides. The low deck height is perfect for a low load angle and the slip-resistant deck assists in equipment loading. The B-2DT features a rubber-ride axle for a smooth ride, electric brakes, an adjustable hitch, and a positive locking (over-center) latch system to keep the deck secured to the frame.

Quick Specs:

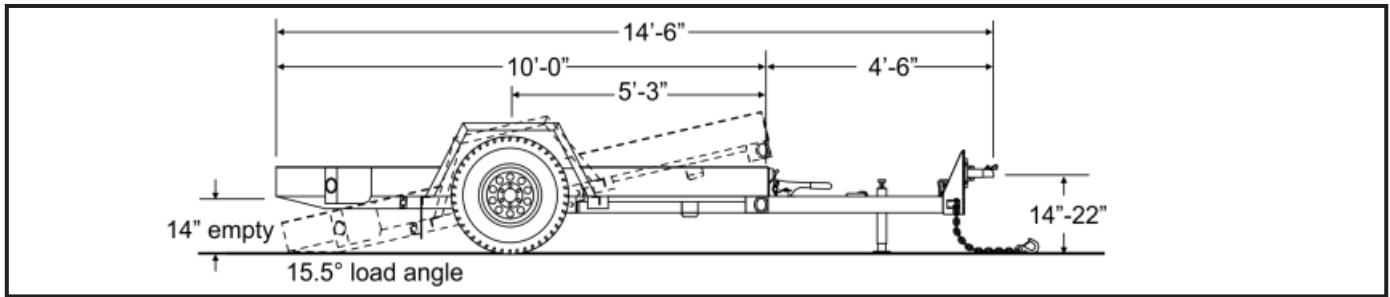
- Steel pan deck
- 14" deck height (empty)
- 54" between fenders
- 10' deck
- Electric brakes
- Dexter[®] Torflex[®] axle
- E-Z Lube hubs
- LED Lights and Sealed Wiring



**GALVANIZING
AVAILABLE**



Photos may show optional equipment.



SPECIFICATIONS				
CAPACITY / DIMENSIONS				
S=Standard O=Optional				
B-2DT				
Payload Rating (lbs/kg)	3,500 / 1588			
GVWR (lbs/kg)	4,600 / 2086			
GAWR (lbs/kg)	3,500 / 1588			
Approx. Avg. Weight (lbs/kg)	1,100 / 499			
Overall Length (ft-in/mm)	14-6 / 4419			
Deck Height (empty)(in/mm)	14 / 355			
Overall Width (in/mm)	80 / 2032			
Load Width (in/mm)	54 / 1372			
TONGUE				
Tongue Length 4'-6" (1372mm)	S			
Pintle Ring (in)	2.5			
Safety Chain	3/8" Grade 43			
Bolt-on Drop-Leg Parking Jack	5K			
FRAME / RAMPS				
Main Beam	4 x 2 Tubing			
Crossmembers	3" Jr I-beam			
Headboard Height (in / mm)	8 / 204			
Deck	Steel Pan			
Deck Lip (in / mm)	8 / 204			
Deck Latch	Single Point			
12 ga. One-piece formed fenders and inner panel	S			
Load Angle (degrees) – depending on deck length	14			
Tie Downs	D-ring			
Number of Tie-Downs (Total / Side)	6 / 3			
SUSPENSION / TIRES				
Rubber-Ride Axle w/Warranty	S			
Axle Capacity (each) (lbs/kg)	3,500 / 1588			
Axle Spread (in/mm)	N/A			
Hubs	E-Z Lube			
Electric Brakes w/Forward Adjust	S			
Brake Size (in/mm)	10x2.25 / 250x57			
Battery Break-Away Kit with Tow Charger	S			
Wheels (in/mm)	15x6 / 381x152			
Wheel Bolt Pattern	6-bolt			
Tires / Load Range Rating	225/75R15 / D			

STANDARD EQUIPMENT

- Adjustable hitch height
- Weather resistant sealed modular wiring
- Grommet mounted LED lights
- Registration holder
- Rust inhibiting primer
- Durable, rust inhibiting top coat
- Die-cut UV resistant vinyl decals
- D.O.T. approved conspicuity tape
- Mud flaps
- RV electrical plug
- Trailer color: Equipment black

OPTIONAL EQUIPMENT

Other options may be available. Ask your dealer or visit our web site.

- Hydraulic surge brakes
- 6-pole round electrical plug
- Oak wood deck
- Deck cushion cylinder
- Rubber runner pads
- Additional tie-downs
- Spare tire and wheel
- Color options: Construction Yellow, Equipment Red, Blue, Charcoal
- Galvanizing

ROCK-SOLID RELIABILITY

U.S.A. DESIGNED AND BUILT IN LITCHFIELD, MN

*Payload capacity is calculated by taking the GVWR and subtracting the trailer weight.

Listed GVWR, weights, and dimensions are for reference only. Manufacturer reserves the right to change models and specifications as they see fit. See our web site or your local authorized dealer for more information.